

Introducing your new FAN KIT PRO V2

As a serious Simracer or a professional Arcade Owner, you can be proud to own the best fan system for cooling people while enjoying driving / riding / flying and any other fun or serious activity you can imagine. If you need to get the system compatible with another solution, just ask us. Contact information is available on the hsimracing.com.

Your FAN kit is the result of long researches getting the right hardware to match the needs regarding air flow power, noise, durability, size, design, integration, ergonomic and ease of use.

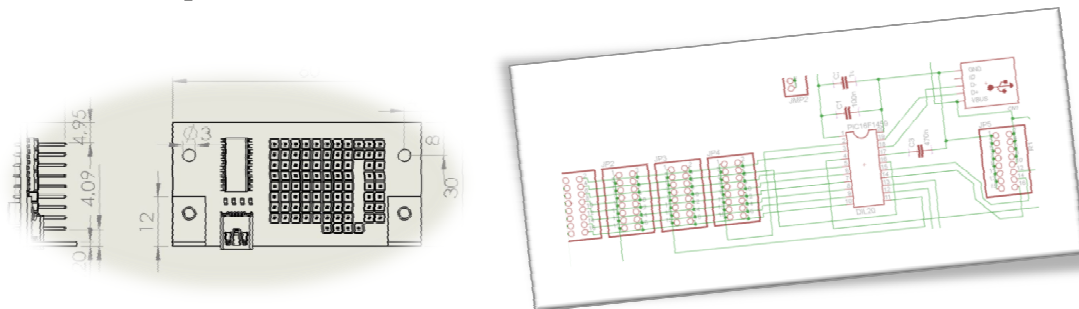


Integration of the R'FunPRO V2 in the IMS VR bikes

After years of tests under worst conditions, you have the benefit of the best effort we (Hsimracing.com) could have made with all our great partners. One of our professional owners use his system on a mobile simulator: on Rally events even under bad weather conditions and direct sun exposure with full day duration opening...

Your system is close to be bullet proof!

It has its own custom electronic with microcontroller firmware to be the lightest possible to run on your computer and to be reliable over the years. No crashes. Far ahead of other Arduino based products. It also comes with its dedicated software HSR R'Fun Control Panel.

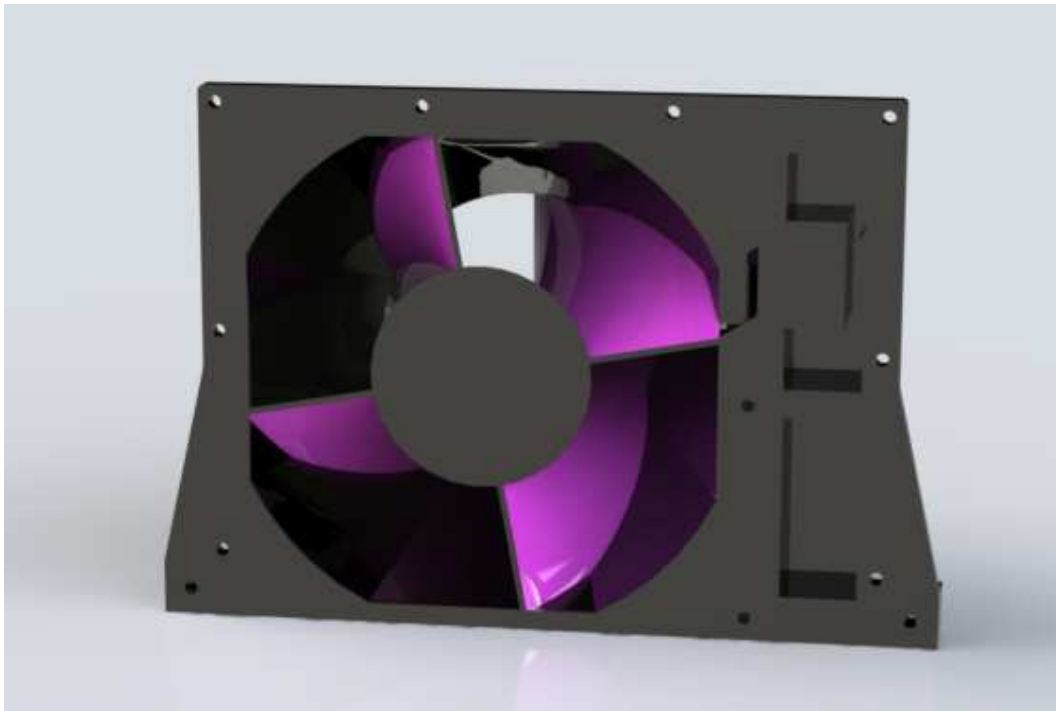


That said, any computer connected to a fan system can freely use the full version of the launcher program called AppStarterKey (startup sequence pushing a button), enjoy ☺
<https://hsimracing.com/hsr-appstarterkey-install/>

 **HSR AppStarterKey INSTALL**

File size: 2 MB Downloads: 103

Aeronautical engineering and high end 3D printing technology is the combo we are using to make it close to the perfection. This is how to get air flow as laminar as possible in tubes:



Sectional view of a FAN system

Beautiful colors also have contributed to the success of the product.



FAN kits demo at the 2018 simexpo on the JCL stand



R'Fun PRO V2 - User Manual

Thank you very much again for your interest in our products and services.

For any question/suggestion/bug report, please send us an e-mail or use the *contact* page on the website.

Introducing your new FAN KIT PRO V2.....	1
Installing the R'Fun system.....	4
Control Panel Software.....	4
Setup.....	4
Quick Settings.....	13
Adjusting the FAN power respond.....	14
Troubleshooting.....	17

Installing the R'Fun system

Control Panel Software

Setup

Get the latest software version on this page:

<https://hsimracing.com/rfun-control-panel/>

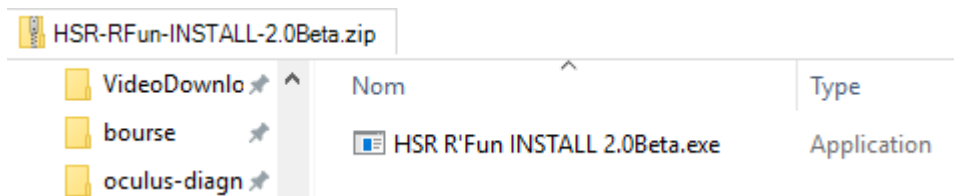


HSR R'Fun INSTALL 2.0Beta

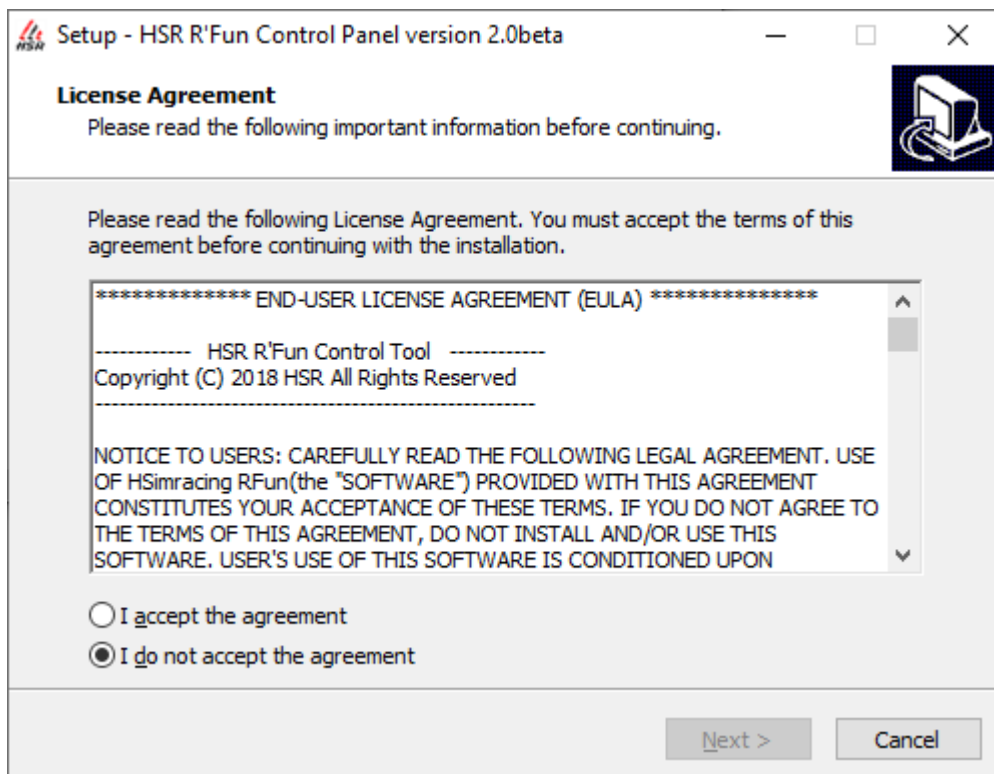
-Bug Fix - Interface Rework - Ignored button in .ini - SIM Dashboard support - TacView support

File size: 13 MB Downloads: 8

Open the file



Double click on HSRR'FunINSTALL(xxx).exe



Click on:

I accept the agreement

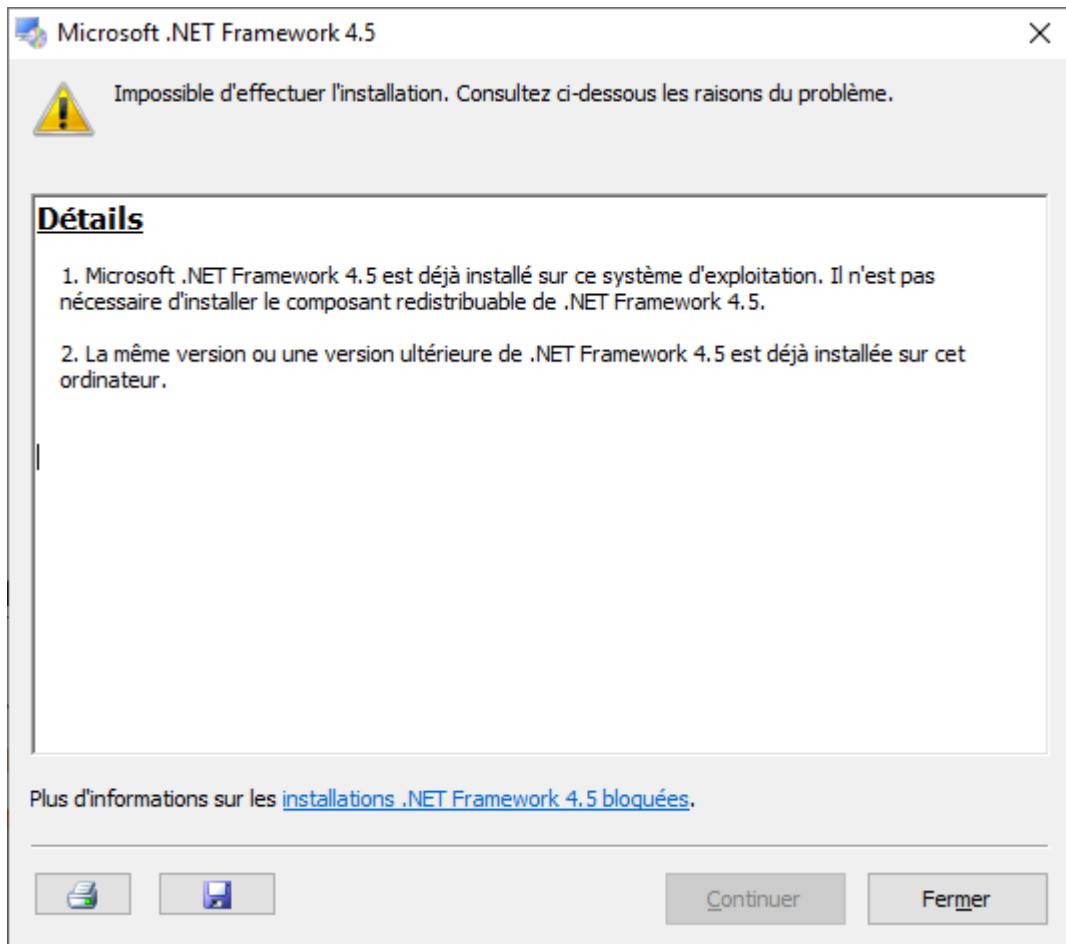
Next >

Next >

Next >

Install

.NET framework 4.5 from Microsoft



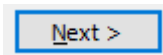
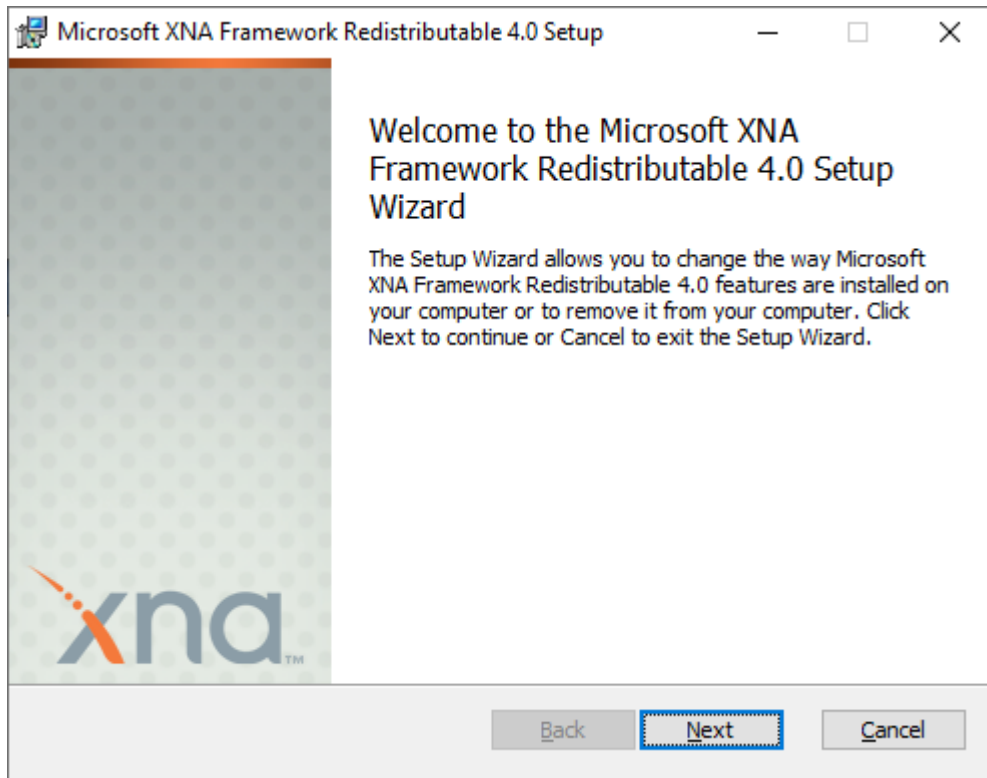
Continuer

(Continue) or

Fermer

(Close)

XNA framework from Microsoft

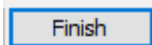


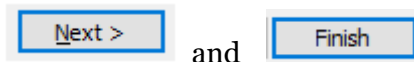
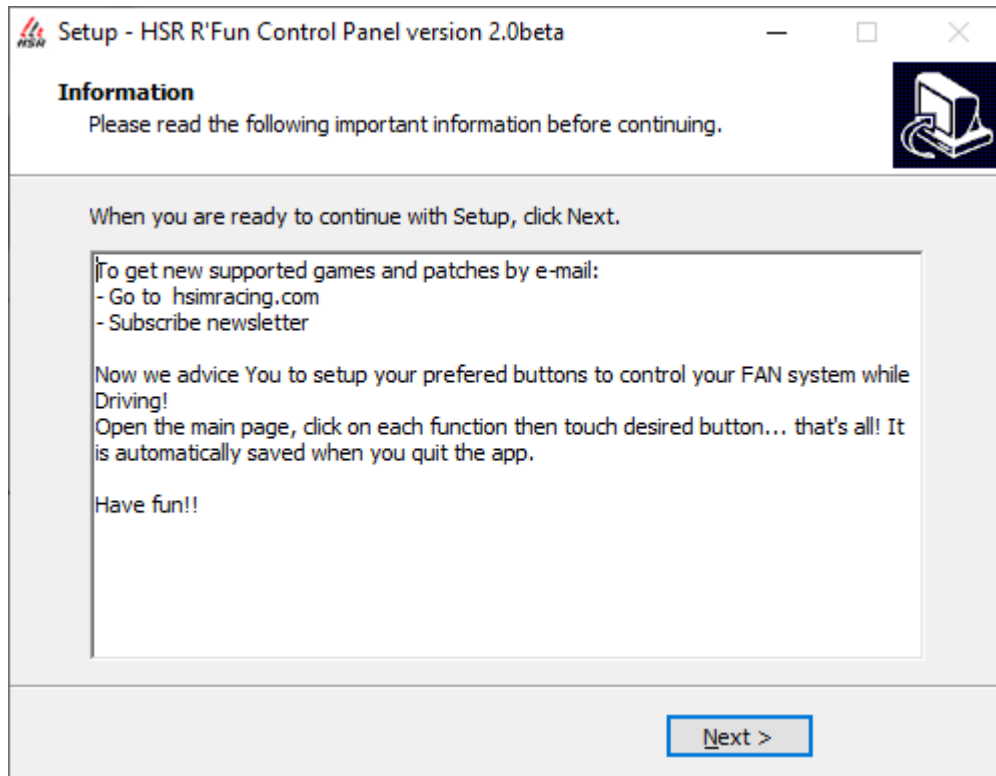
If you can't click next a second time it is already installed, so click on



If you can click next, just install it.

Then click on





List of compatible games is here:

<https://hsimracing.com/compatibility/>

Check for the **Native Support** column:

Game Name	SIM Dash (included)	Native Support	TacView (50% off)
-----------	---------------------	----------------	-------------------

If you want to use other games than the native supported ones, you need to install and activate SIM Dashboard PC server.

If you want to use PLANE games, you need to pay (get 50% off contacting us) install and activate TacView

Install SIM Dashboard PC server

(Optional step)

download setup on this page :

<https://www.stryder-it.de/simdashboard/index.php#install>

Launch setup and click next several times

Activate SIM Dashboard PC server (Optional step)

Open *SIM Dashboard PC Server* window



If it already runs in background, just click on its icon on the list in the bottom right corner of your screen:



Go to Miscellaneous menu



Check "Activate Data Output for HSR Fan Kit R'Fun"

Click on "Load License" and open the file attached to this email

Open the file attached to the dedicated e-mail you have received.

Notice:

If you buy *SIM Dashboard* on Google Play (to also use it with your Smartphone)
You will get money back on PayPal. Just forward us an email with a proof of your purchase.

Install Tacview

Download the latest version of Tacview at <http://tacview.net/download>

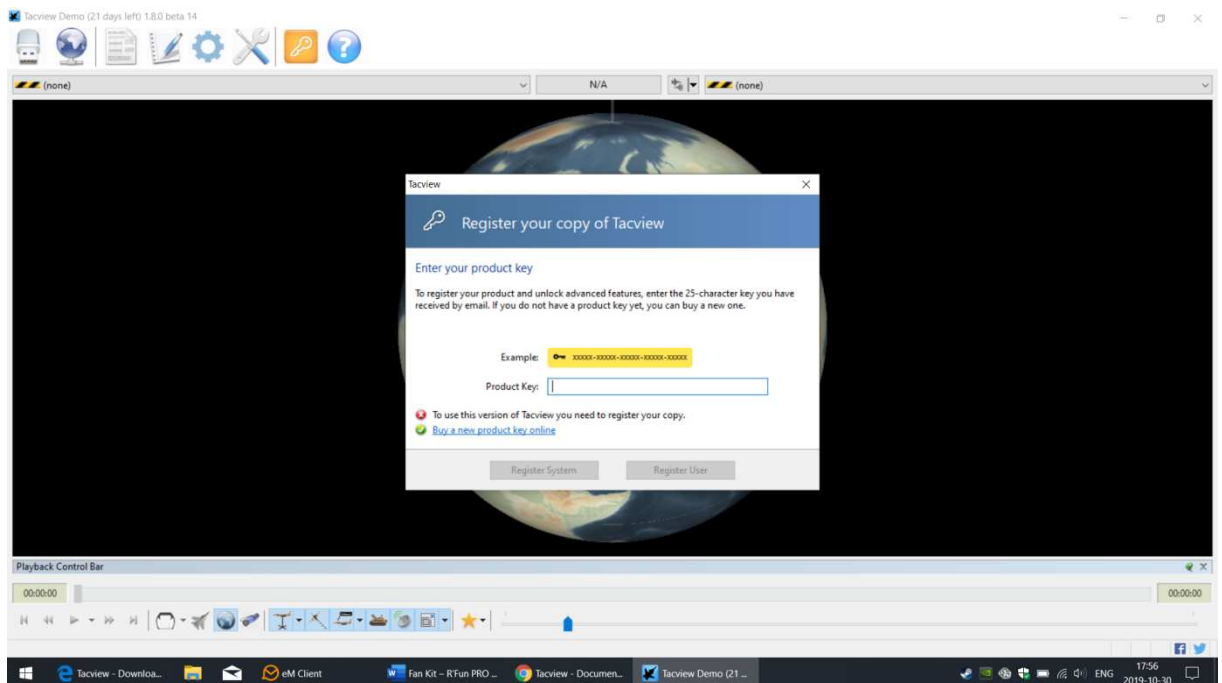
If you need a new licence, please send us an e-mail or use the contact page on the website with your order id to get your voucher (-50%)

Run the installer. Consult the documentation for your simulator:

<https://tacview.net/documentation>

Activate Tacview

Run Tacview. Click on the yellow key icon to be prompted to enter your product key:



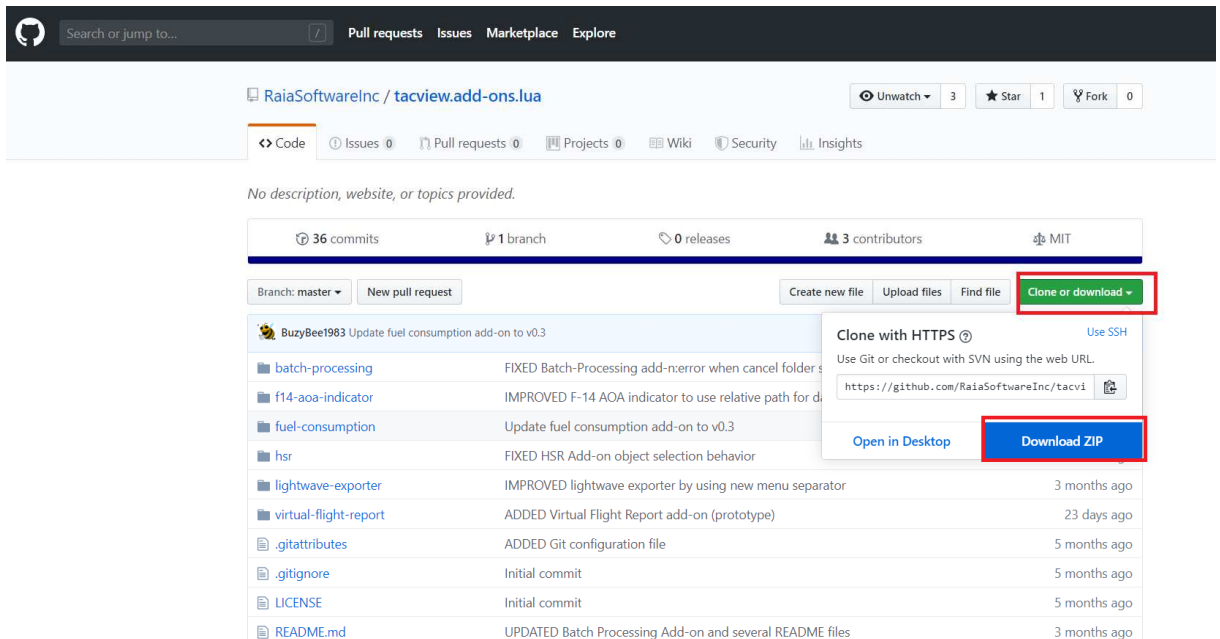
Install and Activate Tacview add-on

Access Tacview's add-on repository

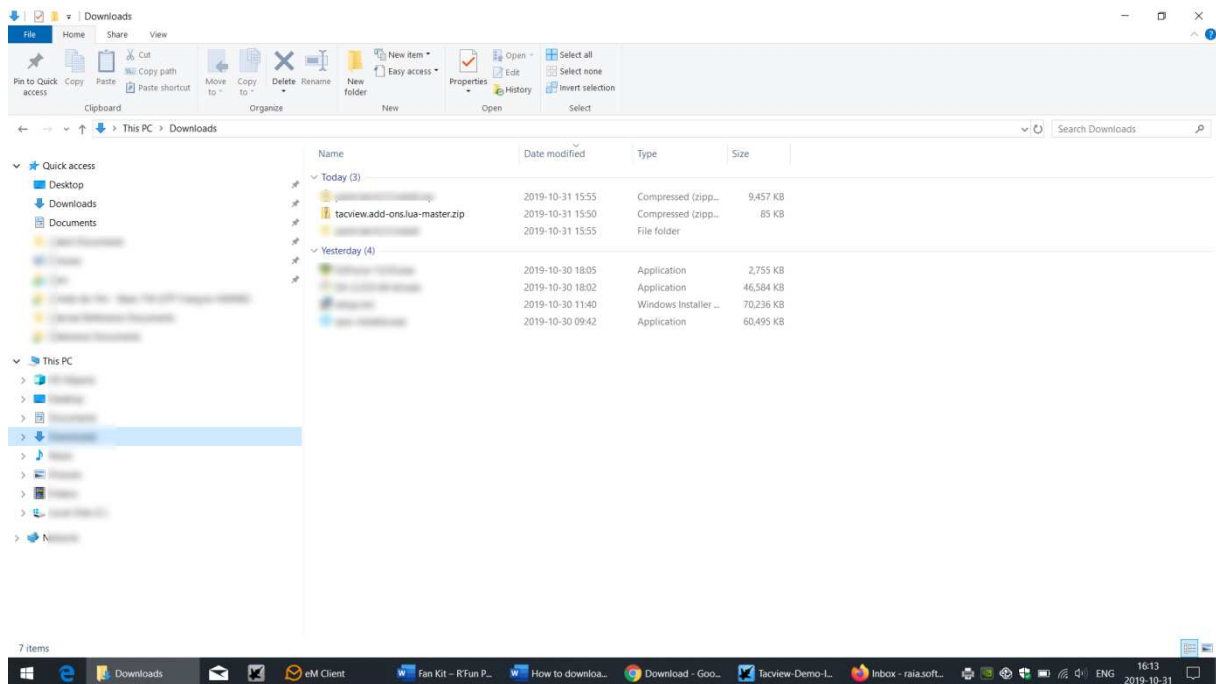
<https://github.com/RaiaSoftwareInc/tacview.add-ons.lua>



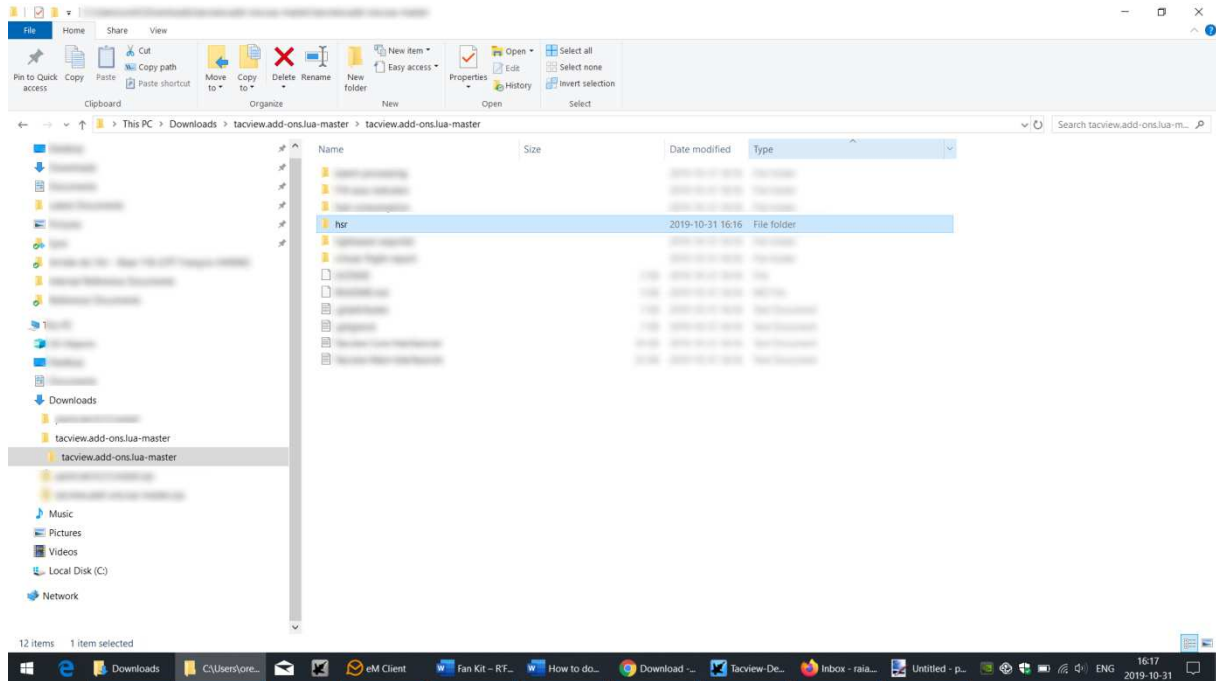
Click on **Clone or Download** and **Download Zip**



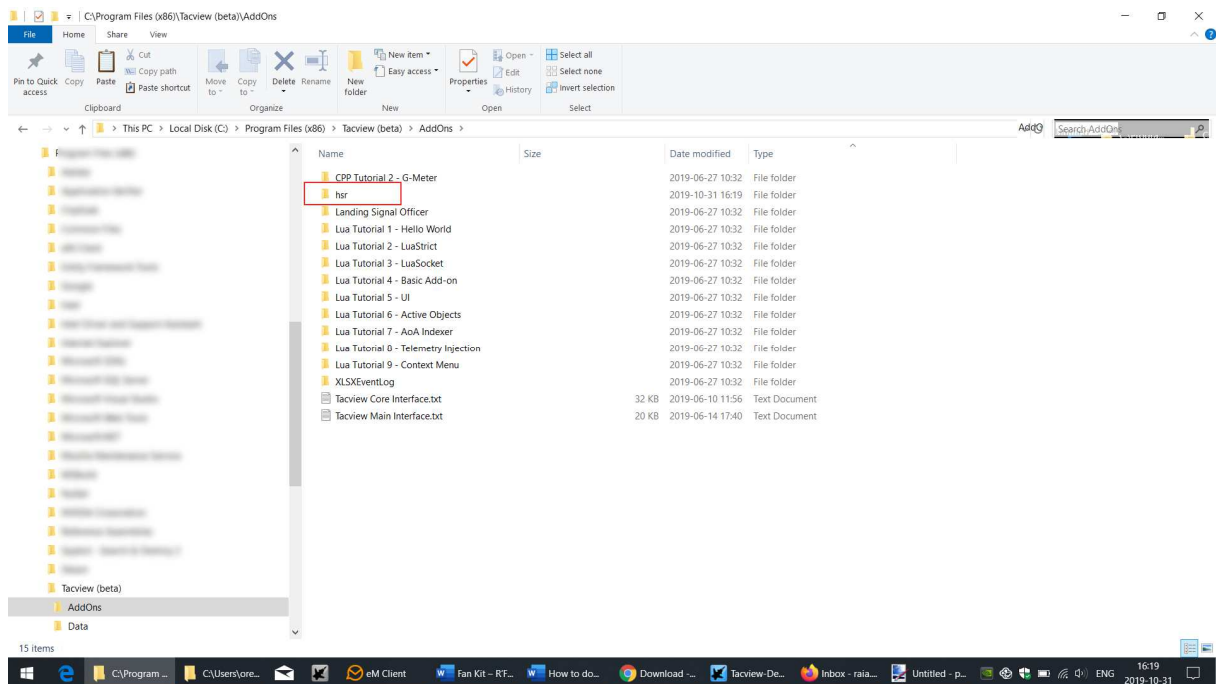
The .zip folder will appear in your Downloads folder.



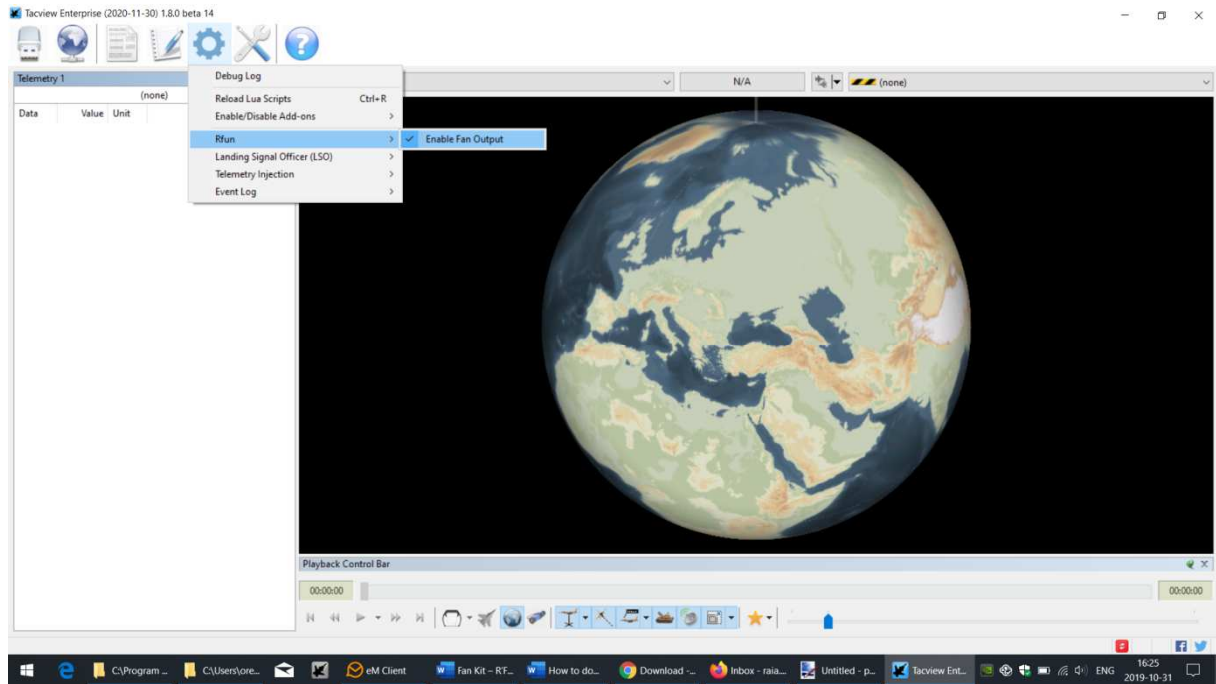
Extract the files and select the folder belonging to the add-on you are interested in (hsr)



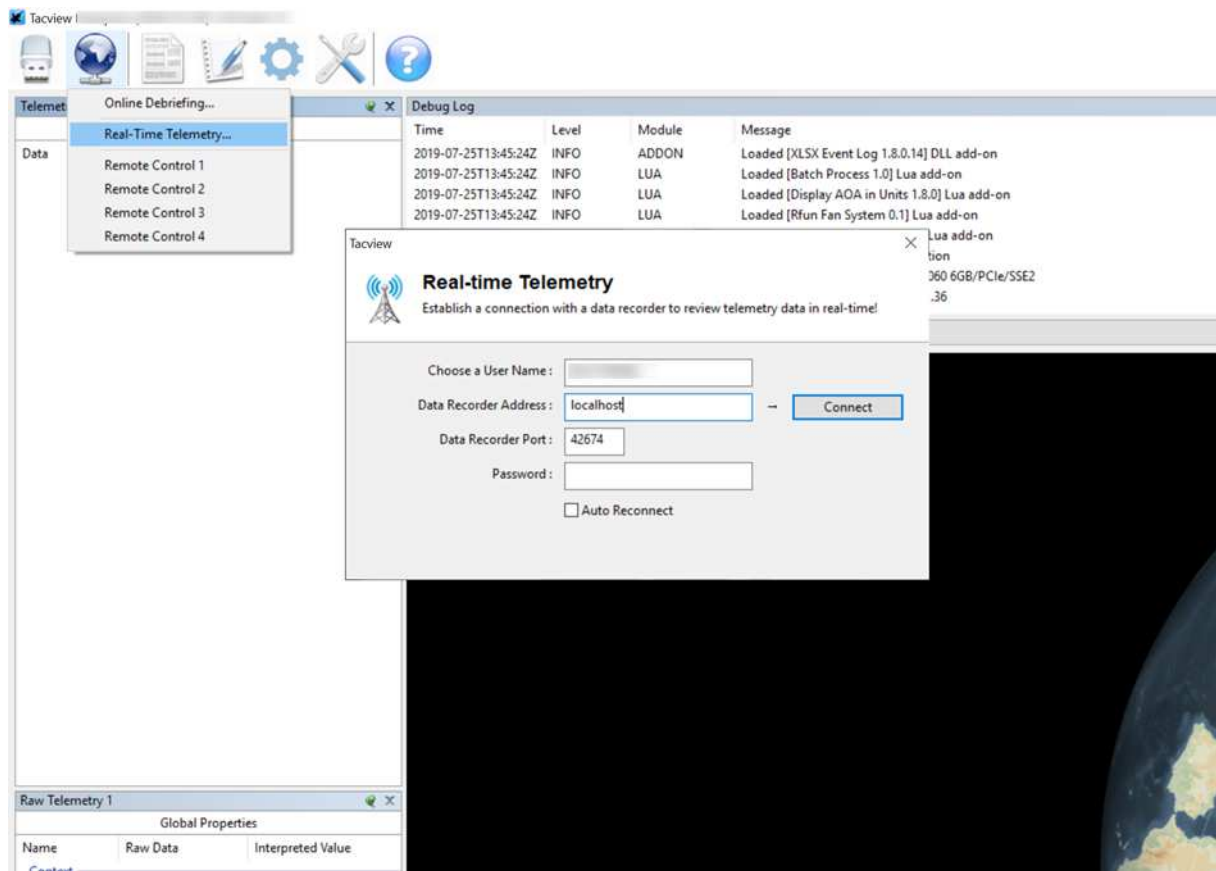
Copy the entire folder and paste it into **C:\Program Files (x86)\Tacview\AddOns**



Launch Tacview. Enable the add-on by clicking Add-ons ->Rfun -> Enable Fan Output. A check mark will appear next to Enable Fan Output when the add-on is enabled.



Connect to Real-time Telemetry and enter localhost as your address and **Connect**. You are now ready to fly!



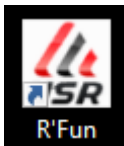
Quick Settings

Be sure that your system can't move before the FAN motor will start to turn!

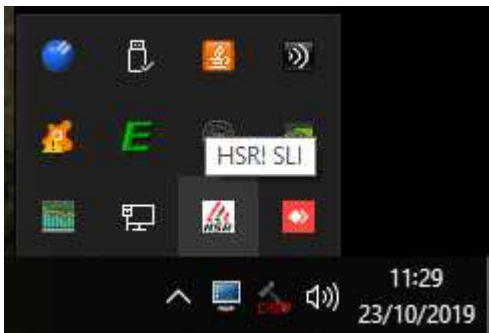
Testing

(Optional step)

1. Plug USB cable and Power supply on your fan system
2. Open software

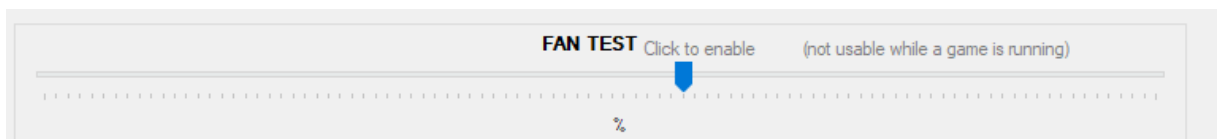


Sometime it can be running in background. You can find it in the bottom right corner of the screen. Double click to open the windows.



3. Test the FAN system


In the FAN TEST section, move the blue cursor:




Adjusting the FAN power respond (Optional step)

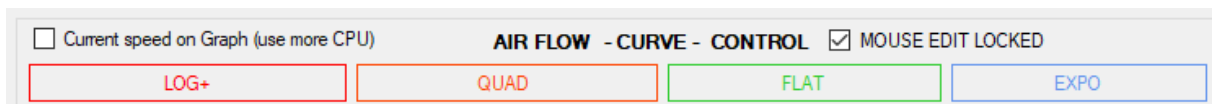
The air flow power responds to the in-game speed.

Examples

Fan motor can accelerate quickly at low speeds and slowly at high speeds to give more fresh sensation to the driver (more air in average) => 

Fan can accelerate slowly at lower speed and quickly at higher speed to give more speed sensation to the driver (less air in average) => 

You can adjust FAN power curve by clicking the 4 buttons in color(default is FLAT)



Custom designed curve

(Optional)

You can fine adjust the curve if you want to take time to do it.

Just uncheck

MOUSE EDIT LOCKED

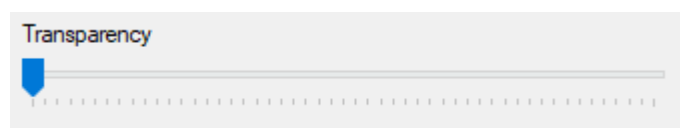
And draw the new line clicking and moving your mouse (saving automatically)

Advanced users:

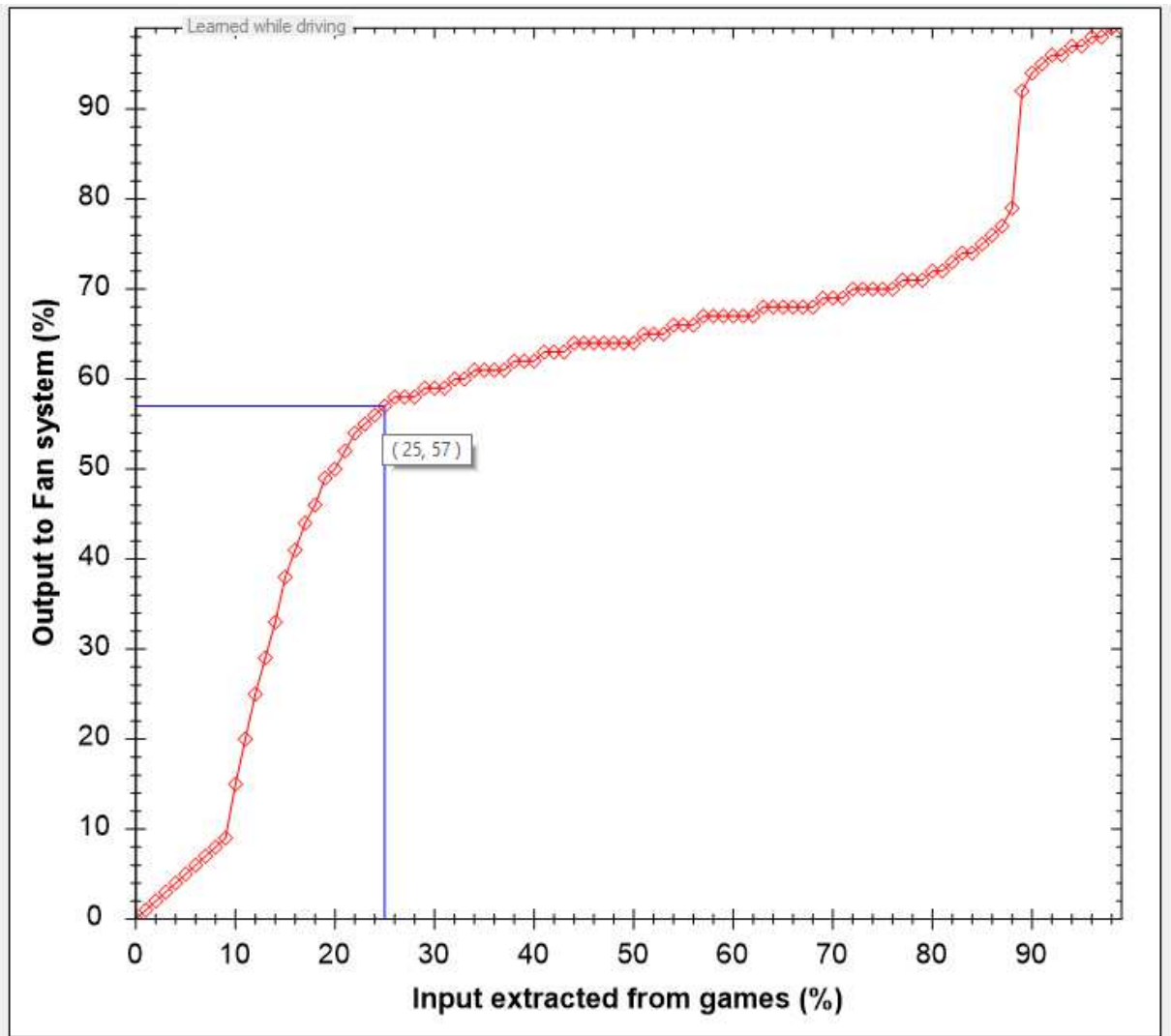
You can draw the curve while driving (not in VR).

1/Check it: Current speed on Graph (use more CPU)

2/Use Transparency feature to put the application over your game



Notice: Your game needs to be running in windowed mode (not fullscreen).



Editing the curve manually

Saving a second profile

(Optional step)

When you touch the curve by clicking, profile 1 is automatically saved (and used when application starts). You can save your current curve on a second profile in case you

what to try something else and go back on it. Just click on:

SAVE 2

For advanced users, you can open .ini file and manage manually [GRAPH1] and [GRAPH2] values. To access .ini file with ease, just click on top of the windows on:

Open Log and .ini files folder

Configure Buttons to affect air flow during racing

(Optional step)

Good to know

You can use any buttons of any of your connected controllers.

You can monitor/watch all of them, scroll at the most bottom of the app and click on:

Check Buttons Use it to know everything about your buttons.

Saving button settings is automatic when you change anything.

There are FIVE buttons that can be used:

Turbo mode
Minimum air flow UP
Minimum air flow DOWN
Maximum air flow UP
Maximum air flow DOWN

*Turbo mode:
Give some fresh air out of the car:
when in pit, replay or menu ... (even on
desktop of Windows without any game
launched)*

Notice 1:

You get sound feedbacks.

They are useful while driving with Virtual Reality Headset.

It allows you to know when a setting is changed, confirming you have pushed a button.

It also changes of sound when a setting is at its maximum or minimum value.

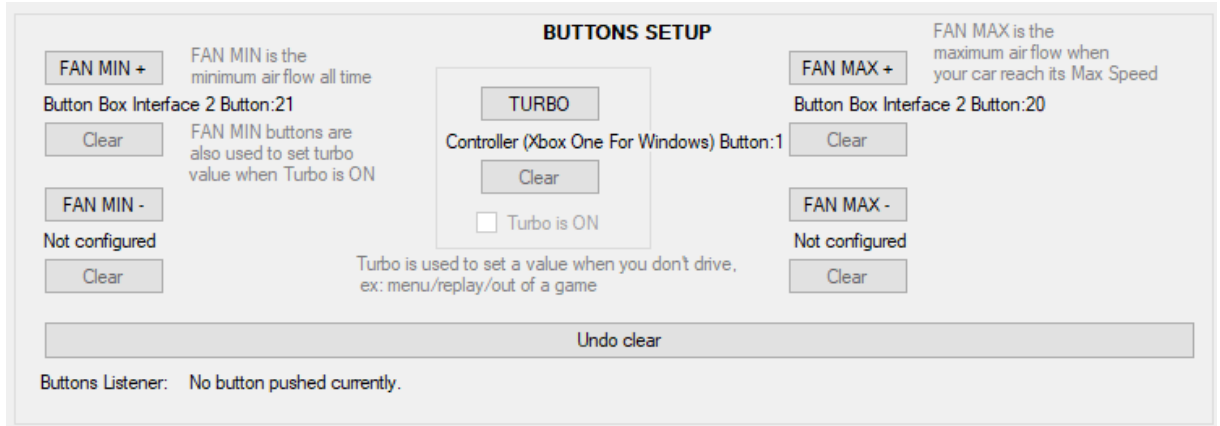
Notice 2:

When turbo mode is engaged, **minimum air flow UP and DOWN** are used to set the turbo fan speed, (no more the in game value).

When turbo mode is disengaged, **minimum air flow UP and DOWN** are used back to their original feature (while driving cooling).

Assigning buttons

1. Click on a button to start the countdown.
 2. Press the choose button to learn it under the limited time of the countdown.
- You can click *Clear* if you don't need the button anymore, and *Undo clear* if needed.



For advanced users,
You can open .ini file and manage manually [BUTTONS] values.
To access to the .ini file with ease, just click on top of the windows on:

Open Log and .ini files folder

Troubleshooting

With some “all the time” activated button, or “repeated button” system, it can be impossible to use the assign/learn method. It is the case with some F1 wheel with clutch paddle.

You can black list up to 3 buttons to not be listened by the application.

To do that, open .ini file and add this line in the [BUTTONS] section:
BlackListed1=ControllerName:buttoned

To access to the .ini file with ease, just click on top of the windows on:

Open Log and .ini files folder

Example:

BlackListed1=ClubSport Wheel Button:20